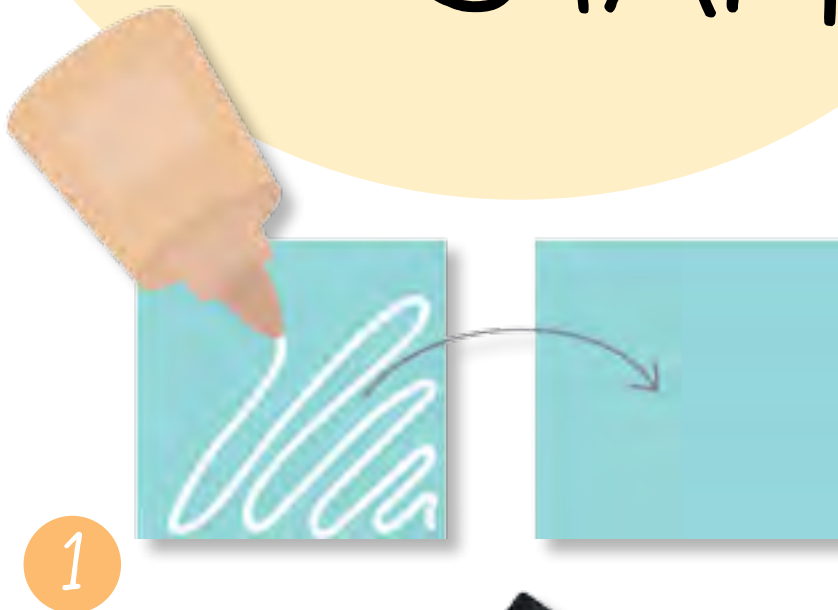


# Foam rubber STAMPS



1 Take two squares of foam rubber and glue them together. This will make your stamp thicker so it will stamp better. Wait for the glue to dry.

2 Trace the shapes on page 90, cut them out and use them as patterns on top of the foam rubber.



3 Cut out the foam rubber, following the shape you selected.



4 Using white glue, stick the stamp you cut out onto a piece of wood or any other material that would work as a base. Let the glue dry.



5 Dip your stamp into ink and start stamping, on postcards, notebooks...

YOU ONLY MAKE IT ONCE,  
BUT THEN CAN STAMP  
100S OF TIMES!





# PUZZLE cubes

1 Photocopy the pattern on page 93. Cut the shape out and trace the outline onto poster board using a pencil. As shown in the drawing, mark the separation of the squares without tabs.

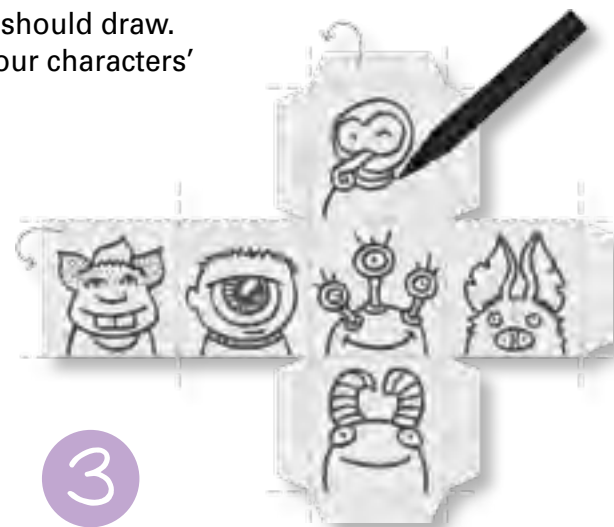
2 Cut out the outline of what will be your cube.

2



3 Mark all the folds for the cube (tabs and sides) to know how far you should draw. Draw your characters' heads.

3



1

4

4 Color them in.



5



5 Put glue on the tabs of the cube and close it, as shown in the image. Repeat these steps to make the cube for the bodies and the legs of your characters. When you have made the three cubes, now you can play with the body-parts puzzle and make any funny combination you want.

THIS PUZZLE HAS  
EXTRATERRESTRIALS...  
WHAT ARE GOING  
TO MAKE?





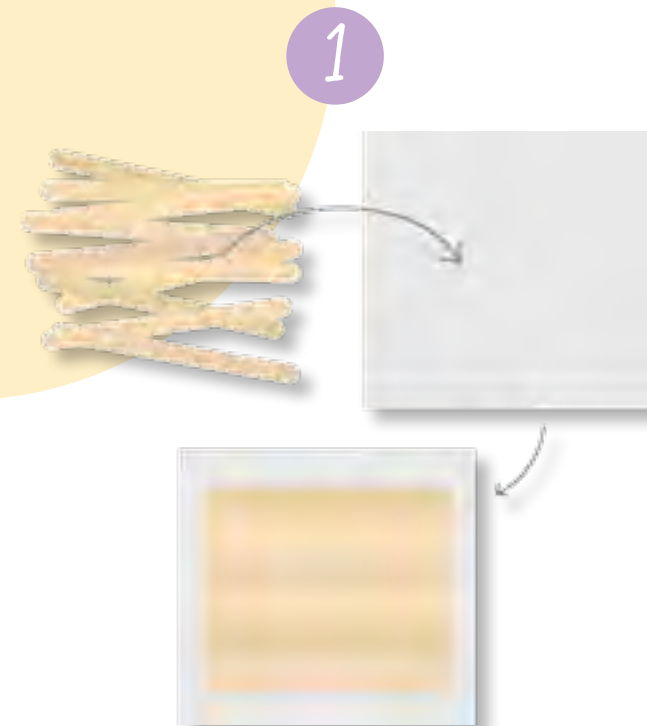
# Ice-cream-stick PUZZLE



1 Line up the ice-cream sticks on top of a piece of paper.

2 Tape them onto the paper at both ends so they don't move while you are painting.

3 Paint any picture you want for your puzzle. Remember that your drawing should cover all the sticks—at least a little—so that people can put it together later.



1

2

3



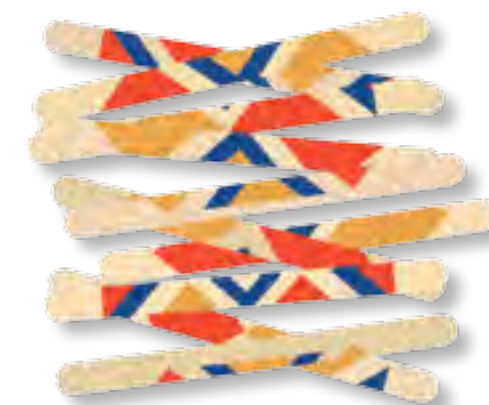
4

YOU COULD DRAW  
A LANDSCAPE THAT  
YOU REALLY LIKE.



4 After the paint dries, remove the tape and the paper.

5 And your ice-cream-stick puzzle is ready to go! Mix the sticks up and put it together again.



5

